

SL4500R Transportation Plan

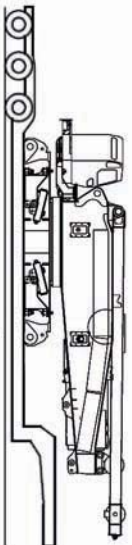


SHL 256 ft boom and 217 ft jib + SHL base weight only

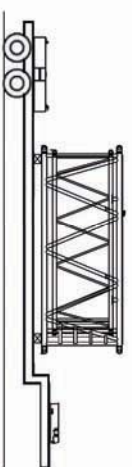
Description of item	Weight lbs (kg)	Trailer Loads																					
		#1	#2	#3	#4	#5	#6	#7	#8	#9	#10	#11	#12	#13	#14	#15	#16	#17	#18	#19	#20	#21	#22
Base Machine with mast	132,300 (60,000)	1																					
Crawler	67,200 (30,500)		1	1																			
Counterweight (A)	44,200 (20,000)					1																	
Counterweight (B)	22,100 (10,000)						1	1	1	1	1	1	1	1	1	1	1	1	1	2	2	1	
Counterweight (C)	11,050 (5,000)						1	1					1					1					
Carbody Weight Base	12,500 (5,670)								1	1													
Boom Base	53,100 (24,100)				1																		
Boom Tip	13,400 (6,100)														1								
20 ft Insert Boom and Guy Line	5,300 (2,400)						1	1															
40 ft Insert Boom and Guy Line	10,200 (4,700)										1	1	1	1									
25 ft Taper Boom and Guy Line	7,900 (3,600)														1								
Luffer Jib Base	6,200 (2,820)										1												
20 ft Luffer Insert Jib	3,100 (1,400)						1	1															
40 ft Luffer Insert Jib	5,300 (2,400)										1	1	1										
Luffer Jib Tip with Aux. sheave	6,700 (3,040)								1														
Rear Strut Assembly	7,400 (3,360)															1							
Front Strut Assembly	6,200 (2,820)															1							
HL Mast Base	17,900 (8,120)																1						
40 ft HL Mast Insert with Guy Line	9,200 (4,180)																	1					
HL Mast Tip with Guy Line	19,700 (8,950)																		1				
SHL Palletweight Base	24,300 (11,000)																						1
Approx. Total Shipping Weight	lbs (kg)	132,300 (60,000)	67,200 (30,500)	67,200 (30,500)	53,100 (24,100)	44,200 (20,000)	41,550 (18,800)	41,550 (18,800)	41,300 (18,710)	40,800 (18,490)	37,600 (17,100)	37,600 (17,100)	37,600 (17,100)	43,350 (19,700)	43,400 (19,700)	35,700 (16,180)	40,000 (18,120)	42,350 (19,180)	41,800 (18,950)	44,200 (20,000)	44,200 (20,000)	22,100 (10,000)	24,300 (11,000)

Loads for transportation were targeted at 45,000 lbs, 48' long, 8' 6" width and 13' 6" height from ground. This may vary depending on truck/trailer weight, style of trailer and state law.

Trailer #1



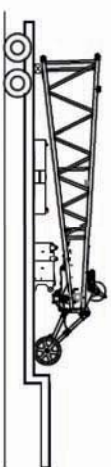
Trailer #7



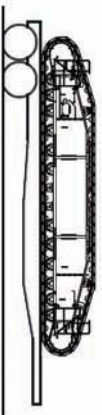
Trailer #2



Trailer #8



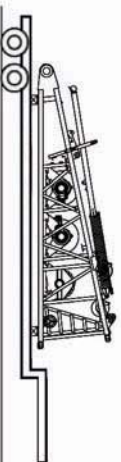
Trailer #3



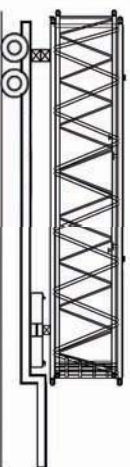
Trailer #9



Trailer #4



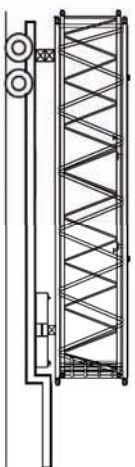
Trailer #10



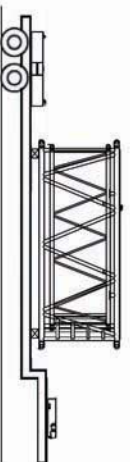
Trailer #5



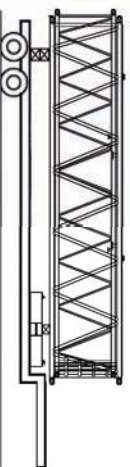
Trailer #11



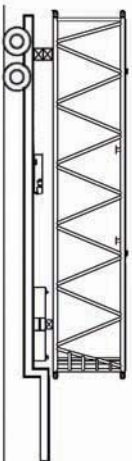
Trailer #6



Trailer #12



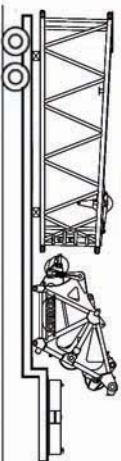
Trailer #13



Trailer #19



Trailer #14



Trailer #20



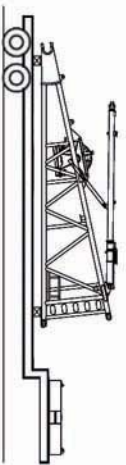
Trailer #15



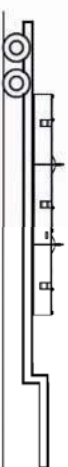
Trailer #21



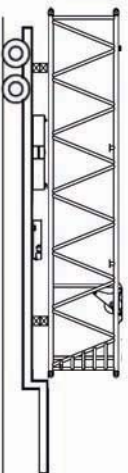
Trailer #16



Trailer #22



Trailer #17



Trailer #18

