

# CK1600-II Transportation Plan

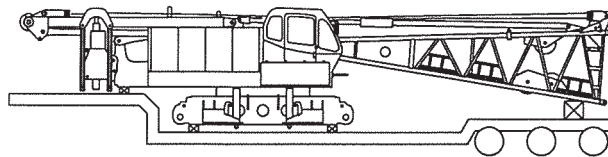


250 ft boom and 100 ft jib

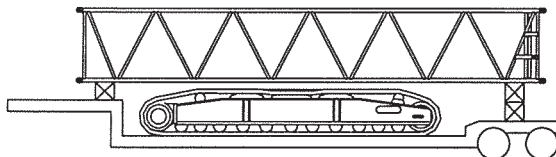
Description of item	Weight lbs (kg)	Trailer Loads						
		#1	#2	#3	#4	#5	#6	#7
Base Machine with Boom Base	86,420 (39,200)	1						
Crawler	36,155 (16,400)		1	1				
Counterweight (A)	17,640 (8,000)					1		
Counterweight (B)	11,025 (5,000)				3	2	3	
Counterweight (C)	5,513 (2,500)							2
Carbody Weight	11,025 (5,000)							2
10 ft Insert Boom and Guy Line	1,390 (630)				1	1		
20 ft Inset Boom and Guy Line	2,200 (1,000)						1	
40 ft Insert Boom and Guy Line	3,770 (1,710)		1	1	1	1		
Taper Insert Boom	1,190 (540)						1	
Boom Tip and Guy Line	4,100 (1,860)						1	
Jib Base and Guy Line	2,270 (1,030)							1
10 ft Inset Jib	270 (120)							1
20 ft Inset Jib and Guy Line	520 (240)							3
Jib Tip	690 (310)							1
Approx. Total Shipping Weight	lbs (kg)	86,420 (39,200)	39,925 (18,110)	39,925 (18,110)	38,235 (17,340)	44,850 (20,340)	40,565 (18,400)	37,866 (17,180)

Target of payload: 45,000 lbs weight, 48 ft long, 8 ft 6 inch width and 13 ft 6 inch height from ground  
Above plan may vary by each state law or specification of trailers.

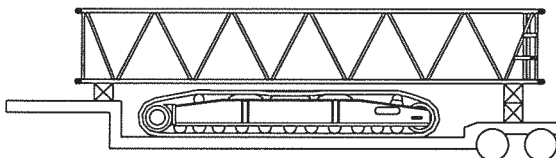
**Trailer #1**



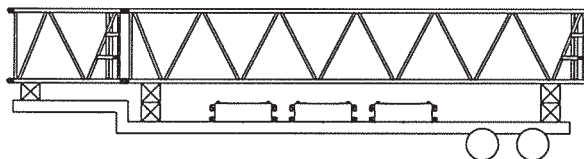
**Trailer #2**



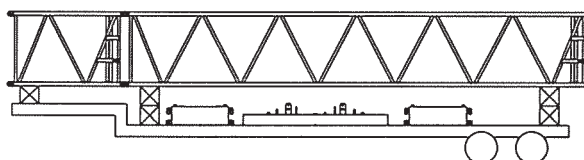
**Trailer #3**



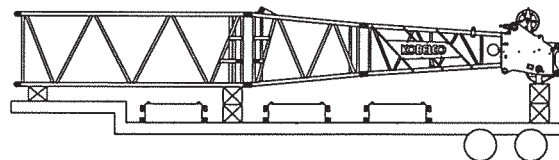
**Trailer #4**



**Trailer #5**



**Trailer #6**



**Trailer #7**

